

TIMBERWALK II SECTION FIVE

49/164

THIS INSTRUMENT WAS PREPARED BY
KEITH AND SCHNARS, P.A.
 ENGINEERS-PLANNERS-SURVEYORS
 1115 N.E. 4TH AVENUE
 FORT LAUDERDALE, FLORIDA

A PORTION OF LOGGERS RUN, A P.U.D.
 BEING A RESUBDIVISION OF A PORTION OF TRACTS "F" & "S-3"
 BOUNDARY PLAT OF ORIOLE COUNTRY (P.B. 32, PGS. 175-180)
 SECTION 26, TOWNSHIP 47 SOUTH, RANGE 41 EAST
 PALM BEACH COUNTY, FLORIDA

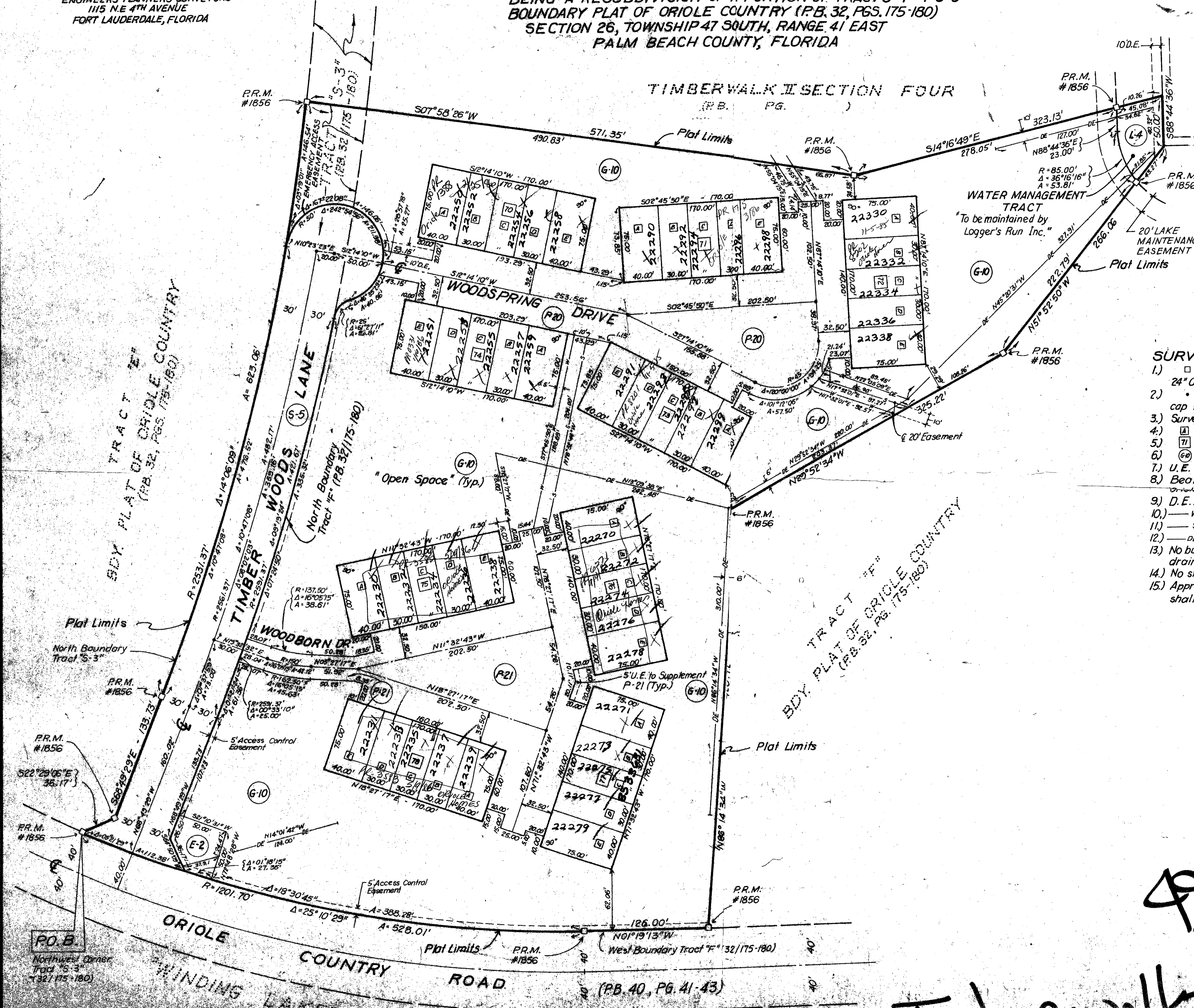
STATE OF FLORIDA
 COUNTY OF PALM BEACH
 THIS PLAT WAS FILED FOR RECORD AT THE DAY OF 1983, AND DULY RECORDED IN PLAT BOOK ON PAGES AND
 JOHN B. DUNKLE
 CLERK OF CIRCUIT COURT

DRAWING NUMBER
49/164

DRAWING NUMBER

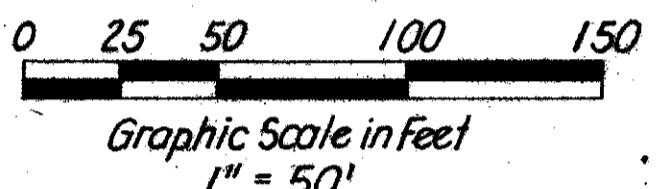
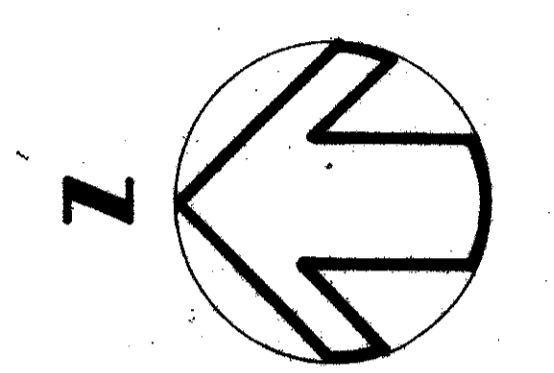
DRAWING NUMBER

DRAWING NUMBER



TIMBERWALK SECTION ONE (P.B. 38 PG. 56 & 57)

PARCEL L-4



- SURVEY NOTES:**
- 1) □ Indicates Permanent Reference Monument and is a 6" dia. x 24" Concrete Monument with a brass disc stamped Keith and Schnars #1856
 - 2) • Indicates Permanent Control Point and is a nail in brass survey cap stamped Keith and Schnars.
 - 3) Survey Data in Field Book: 289
 - 4) [A] Indicates Unit Number.
 - 5) [7] Indicates Cluster Number.
 - 6) [G-10] Indicates Parcel Number.
 - 7) U. E. Indicates Utility Easement.
 - 8) Bearings shown hereon are relative to the Boundary Plat of Oriole Country (P.B. 32, PGS. 175-180) (N88°44'36"E North Boundary Tract 'S-3')
 - 9) D. E. Indicates Drainage Easement.
 - 10) — w — Indicates center line 12' wide water line easement, unless noted otherwise.
 - 11) — s — Indicates center line 12' wide sewer line easement, unless noted otherwise.
 - 12) — DE — Indicates center line 12' wide drainage easement.
 - 13) No buildings or any kind of construction shall be placed on utility or drainage easements.
 - 14) No structures, trees or shrubs shall be placed on drainage easements.
 - 15) Approval of landscaping on utility easements other than water and sewer shall be only with the approval of all utilities occupying same.

20/14/85
 20/14/85
 SUBDIVISION Timberwalk II 5
 BOOK 40 PAGE 164
 FLOOD ZONE A-1 FLOOD MAP # 1001
 QUAD # 22 DRAWING RE
 BE PUD ZIP CODE 33433
 PL NAME LOGGERS RUN

0275-301

P.U.D. DATA

MULTI-FAMILY	114,750 Sq. Ft.	2.6343 Ac.
PARCEL E-2	2,319 Sq. Ft.	0.0532 Ac.
PARCEL G-10	267,511 Sq. Ft.	6.1412 Ac.
PARCEL L-4	2,718 Sq. Ft.	0.0624 Ac.
PARCEL S-5	44,653 Sq. Ft.	1.0251 Ac.
PARCEL P-20, P-21	84,731 Sq. Ft.	1.9452 Ac.
GROSS AREA	516,682 Sq. Ft.	11.8614 Ac.

NUMBER OF UNITS 45
 UNITS PER GROSS ACRE 3.79

49/164
TIMBERWALK II SEC 5